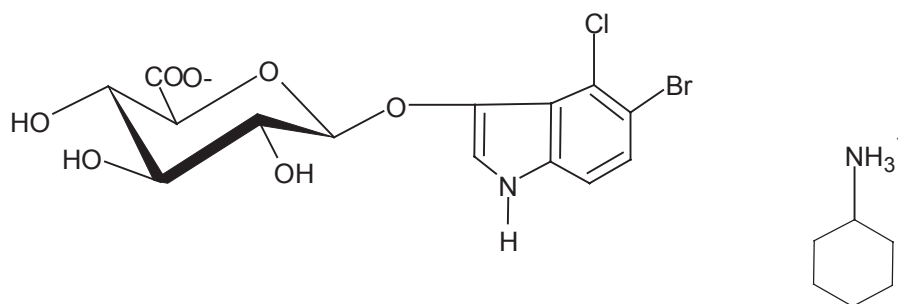




**INALCO PHARMACEUTICALS**  
www.inalcopharm.com

**DATA SHEET**  
enzyme substrate

**5-BROMO-4-CHLORO-3-INDOLYL-β-D-GLUCURONIDE, Cyclohexylammonium Salt**  
(X-GLUCURO, CHA SALT)



Inalco code	1758-0600
C.A.S. R.N.	[18656-96-7]
Applications	Substrate for β-Glucuronidase. It is converted by the enzyme into an intense blue precipitate. It is used for the detection of the GUS gene in bacterial colonies, e.g. <i>Escherichia coli</i> , or for histochemical applications.
Formula	$C_{14}H_{13}BrClNO_7 \cdot C_6H_{13}N$
Molecular Weight	521.8
Appearance	White to off-white powder
Purity	≥ 98%, by TLC
Specific Rotation	$[\alpha]_D^{20} -90.0^\circ \pm 3$ (c=1 in DMF/H <sub>2</sub> O 1:1) dry basis
Water Content (K.F.)	≤ 3.5%
Solubility	Clear and colorless (2% in DMF)
<sup>1</sup> H-NMR	Conforming to the structure
Storage	Store at 0 - 4°C, protected from light and humidity.
Toxicity	Toxicity unknown; avoid exposure.

References: Frampton, E.W., et al., J. Food Protection, 51, 402 (1988)  
 Jefferson, R.A., et al., EMBO J., 6, 3901 (1987)  
 Jefferson, R.A., et al., Proc. Natl. Acad. Sci., 83, 8447 (1986)  
 Watkins, et al., Appl. Environ. Microbiol., 54, 1874-1875 (1988)