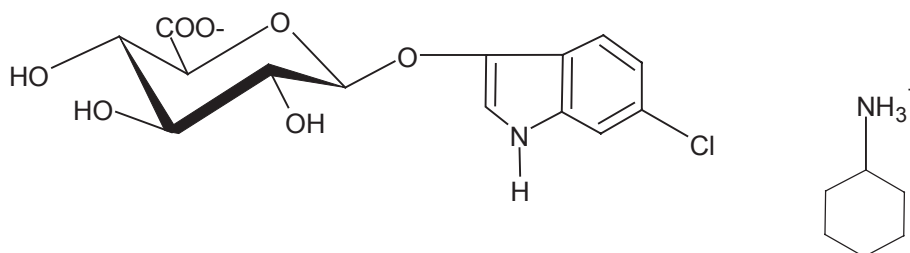




INALCO PHARMACEUTICALS
www.inalcopharm.com

DATA SHEET
enzyme substrate

6-CHLORO-3-INDOLYL-β-D-GLUCURONIDE, Cyclohexylammonium Salt
(SALMON-GLUCURO, CHA SALT)



Inalco code	1758-1300
C.A.S. R.N.	[138182-20-4]
Applications	Substrate for β-Glucuronidase. After enzymatic action it renders an insoluble salmon pink color in GUS ⁺ bacterial colonies. It is used for the detection of β-Glucuronidase and is an alternative to X-Glucuronide.
Formula	C ₁₄ H ₁₄ ClNO ₇ · C ₆ H ₁₃ N
Molecular Weight	442.9
Appearance	White crystalline powder
Purity (TLC)	≥ 98%
Specific Rotation	[α] _D ²⁵ -70° ± 3 (c=1 in DMF/H ₂ O 1:1)
Solubility	Clear (2% in DMF)
¹ H-NMR	Conforming to the structure
Storage	Store at -20° C under inert gas; protect from light and humidity.
Toxicity	Toxicity unknown; avoid exposure.

THIS PRODUCT CANNOT BE SHIPPED TO DESTINATIONS IN THE UNITED STATES.